

# Portable Ultrasound Scanner V16

## Quick Guide

### Your ultrasound scanner kit contains:

- 1x Main unit (ultrasound machine).
- 1x Rechargeable battery.
- 1x Silicone case with belts to protect your ultrasound machine.
- 1x Power adapter 100 to 240 volts.
- 1x Probe.
- 1x Carrying case.

---

### Quick guide to start using your ultrasound scanner:

#### First Step: Recharge battery and connect the probe.

Before you turn on your ultrasound you will need to connect the probe to the main unit otherwise the system will not recognize the probe.

We suggest that you recharge the battery for at least 3 hours before first use. You can use the ultrasound machine while you recharge the battery using the power adapter.

#### Second Step: Turn on the main unit and press 7.

Once you have connected the probe and have recharged the battery you can turn on the ultrasound by pressing the Power button located on the right side (same side where the probe port is located).

Press (7) after you see "Welcome" on the screen to start using the ultrasound.

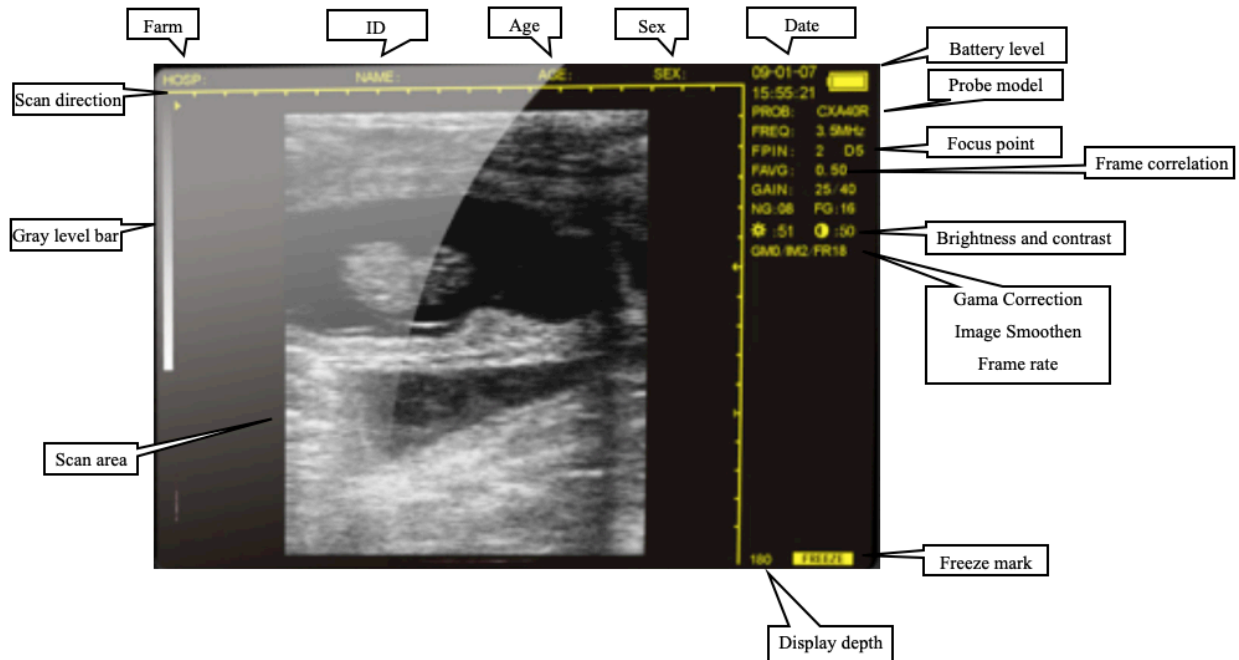
#### Important notes:

1. Remember that you need to apply ultrasound gel on the animal and remove the blue tape (if any) on the reading area otherwise you won't see any images on the screen.
2. You need to have experience on reading ultrasound images otherwise you won't understand what you see.
3. Rectal probes are for rectal examination and convex/ micro-convex probes are for abdominal examination.

# Portable Ultrasound Scanner V16

For veterinary use only

## Overview



### Quick guide to adjust settings and enter information using the keyboard:

- Press (5) or (4) to select frequency, focus point, gain, etc. then press (3) or (4) to adjust.
- Press (1) to adjust Depth.
- Press (Freeze) to pause the image.
- Press (M) or (0) to see more options then select the option you want using the numbers in the keyboard. For example, press (1) to save an image or (7) to reset parameters to factory default.
- Press (Freeze) then (MENU) to enter: Name, Age, Sex, Time, etc.

---

**Download the complete user guide at [ValueStore.us](http://ValueStore.us)**

**Visit: [ValueStore.us/download](http://ValueStore.us/download)** then click on: Ultrasound Scanner V16.

**Questions?** Visit [ValueStore.us](http://ValueStore.us) or email us at [customer@valuestore.us](mailto:customer@valuestore.us)